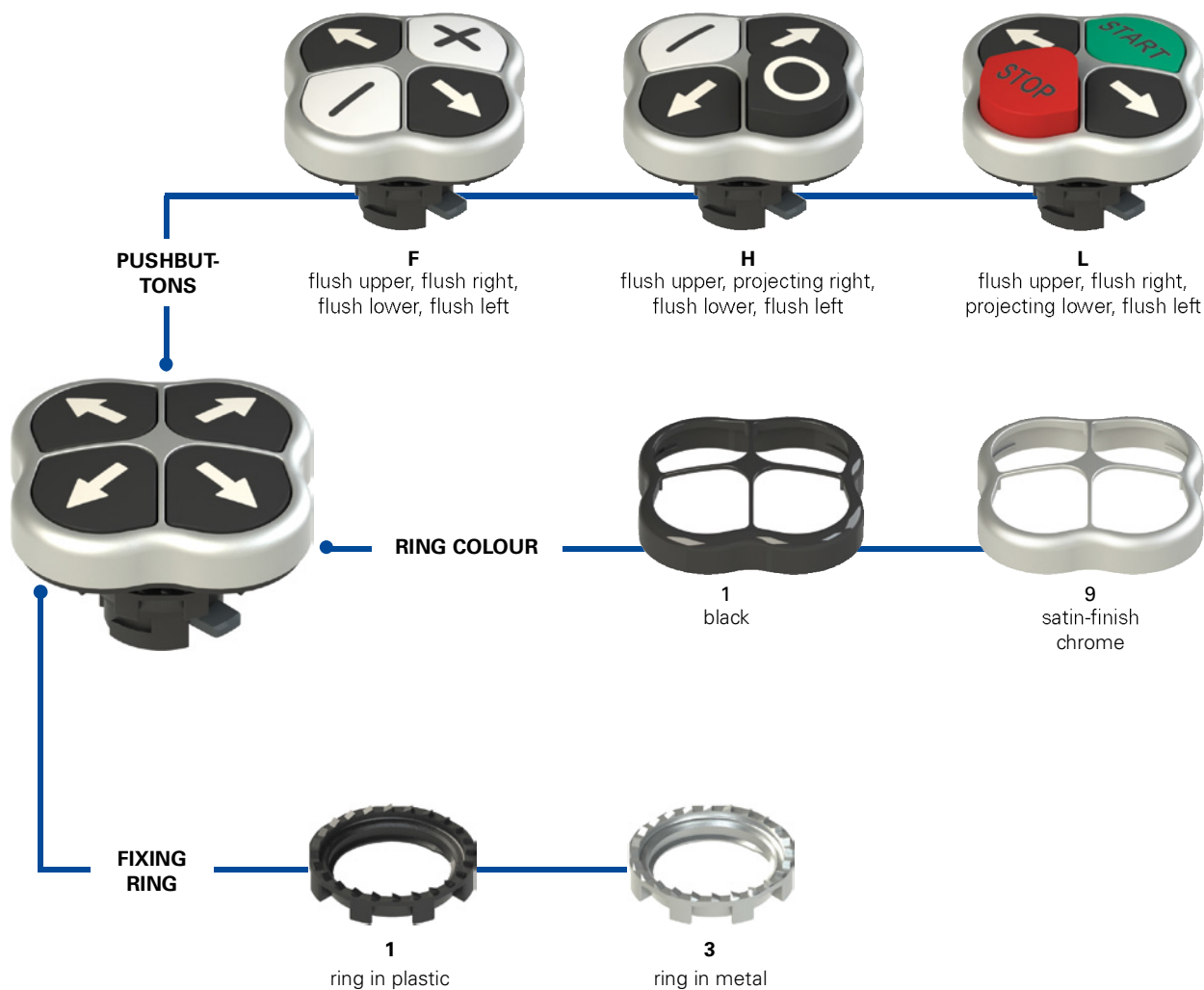


Selection diagram



Code structure

E2 1PQFA1QAAA

Fixing ring and shaped ring

- 1** ring in plastic
- 3** ring in metal

Pushbuttons

- F** flush upper, flush right, flush lower, flush left
- H** flush upper, projecting right, flush lower, flush left
- L** flush upper, flush right, projecting lower, flush left

Note: Other configurations on request.

Ring colour

- 1** black (standard)
- 9** satin-finish chrome (standard)

Colour and markings

	upper pushbutton		right pushbutton		lower pushbutton		left pushbutton	
	colour	symbol	colour	symbol	colour	symbol	colour	symbol
QAAA	black	↑	black	→	black	↓	black	←
QAAB	green	START	black	→	red	STOP	black	←
QAAC	white	START	black	→	black	STOP	black	←
QAAD	green		black	→	red	O	black	←
QAAE	white		black	→	black	O	black	←
QAAF	white	+	black	→	white	-	black	←
QAAH	black	↑	red	STOP	black	↓	green	START
QAAJ	black	↑	black	STOP	black	↓	white	START
QAAK	black	↑	red	O	black	↓	green	
QAAL	black	↑	black	O	black	↓	white	
QAAM	black	↑	white	-	black	↓	white	+
QAAN	black	↑	white	☰	black	↓	white	☷

Attention! The feasibility of a code number does not mean the effective availability of a product. Please contact our sales office.



Technical data

General

Protection degree:	IP67 according to IEC 60529
Ambient temperature:	-25°C +80°C
Mechanical endurance:	1 million operations cycles ¹
Max operating frequency:	3600 operations cycles/hour
Actuating force at end travel:	6.5 (without contacts)
Maximum travel:	5 mm
Ring driving torque:	2 ... 2.5 Nm
Utilization requirements:	see page 3/98 of general catalog 2013-2014

(1) One operation cycle means two movements, one to close and one to open contacts, as foreseen by EN 60947-5-1 standard.


In conformity with standards:

IEC 60947-1, IEC 60947-5-1, IEC 60204-1, EN 60947-1, EN 60947-5-1, EN 60204-1, UL 508, CSA 22-2 N°14

Main features

- Protection degree IP67
- Version with projecting pushbutton
- Possibility of customization with symbols

⚠ Installation for safety applications:

Use only switches marked with the symbol . The safety circuit must always be connected with the **NC contacts** (normally closed contacts: 1-2) as stated in the standard ISO 14119, par. 5.4.

Markings and quality marks:



Approval EAC: RU C-IT ДМ94.В.01024

In conformity with requirements requested by:

Low Voltage Directive 2006/95/EC, Machinery Directive 2006/42/EC and EMC Directive 2004/108/EC.

Positive contact opening in conformity with standards:

IEC 60947-5-1, EN 60947-5-1, VDE 0660-206.

Shape

The new EROUND line quadruple pushbuttons are available in two shapes in order to suit any kind of application: projecting and flush. The possibility to choose shapes, colours and symbols allows various codes combinations.

Mechanical endurance

Thanks to their particular design Pizzato Elettrica quadruple pushbuttons guarantee a mechanical endurance of more than 1.000.000 operations.

Protection degree IP67

IP67 This series quadruple pushbuttons all have protection degree IP67, this way guaranteeing a total protection also in hard environmental conditions.

Customizing possibilities

In order to suit the various requests and needs of the customers, Pizzato Elettrica offers the possibility to customize the quadruple with indelible laser inscriptions and symbols.

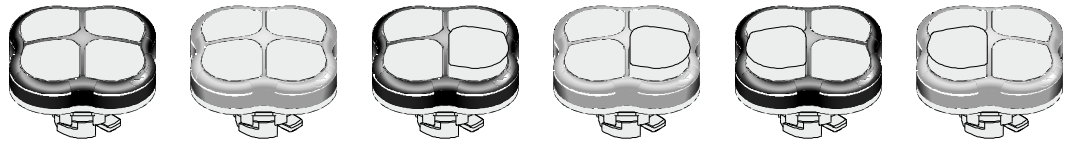
Fixing ring

A fixing ring in metal is also available in addition to the fixing ring in technopolymer. The fixing ring in metal is particularly suitable for those applications which require tighter fitting of the panel-mounted device, such as for example in metal panels having holes without reference notches. Both rings feature a toothed surface which comes into contact with the inside of the panel in order to make it easier for the device to be secured to the actual panel.



Quadruple pushbuttons

Quadruple pushbuttons selection table



Actuator colour and marking (starting from the top and clockwise)	flush upper pushbutton flush right pushbutton flush lower pushbutton flush left pushbutton		flush upper pushbutton projecting right pushbutton flush lower pushbutton flush left pushbutton		flush upper pushbutton flush right pushbutton projecting lower pushbutton flush left pushbutton	
	black ring	satin chrome ring	black ring	satin chrome ring	black ring	satin chrome ring
black pushbutton ↑ black pushbutton → black pushbutton ↓ black pushbutton ←	E2 1PQFA1QAAA	E2 1PQFA9QAAA	-	-	-	-
black pushbutton "START" ↑ green pushbutton → black pushbutton "STOP" ↓ red pushbutton ←	E2 1PQFA1QAAAB	E2 1PQFA9QAAAB	-	-	E2 1PQLA1QAAAB	E2 1PQLA9QAAAB
black pushbutton "START" ↑ white pushbutton → black pushbutton "STOP" ↓ black pushbutton ←	E2 1PQFA1QAAAC	E2 1PQFA9QAAAC	-	-	E2 1PQLA1QAAAC	E2 1PQLA9QAAAC
green pushbutton "I" ↑ black pushbutton → red pushbutton "O" ↓ black pushbutton ←	E2 1PQFA1QAAAD	E2 1PQFA9QAAAD	-	-	E2 1PQLA1QAAAD	E2 1PQLA9QAAAD
white pushbutton "I" ↑ black pushbutton → black pushbutton "O" ↓ black pushbutton ←	E2 1PQFA1QAAAE	E2 1PQFA9QAAAE	-	-	E2 1PQLA1QAAAE	E2 1PQLA9QAAAE
white pushbutton "+" ↑ black pushbutton → white pushbutton "-" ↓ black pushbutton ←	E2 1PQFA1QAAAF	E2 1PQFA9QAAAF	-	-	-	-
black pushbutton "START" ↑ red pushbutton "STOP" → black pushbutton ↓ green pushbutton ←	E2 1PQFA1QAAH	E2 1PQFA9QAAH	E2 1PQHA1QAAH	E2 1PQHA9QAAH	-	-
black pushbutton "START" ↑ black pushbutton "STOP" → black pushbutton ↓ white pushbutton ←	E2 1PQFA1QAAJ	E2 1PQFA9QAAJ	E2 1PQHA1QAAJ	E2 1PQHA9QAAJ	-	-
black pushbutton "I" ↑ red pushbutton "O" → black pushbutton ↓ black pushbutton ←	E2 1PQFA1QAAK	E2 1PQFA9QAAK	E2 1PQHA1QAAK	E2 1PQHA9QAAK	-	-
black pushbutton "I" ↑ black pushbutton "O" → black pushbutton ↓ white pushbutton ←	E2 1PQFA1QAAAL	E2 1PQFA9QAAAL	E2 1PQHA1QAAAL	E2 1PQHA9QAAAL	-	-
black pushbutton "+" ↑ white pushbutton "-" → black pushbutton ↓ white pushbutton ←	E2 1PQFA1QAAAM	E2 1PQFA9QAAAM	-	-	-	-

Items with code on the green background are available in stock

Complete units



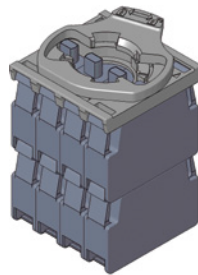
Actuator colour and marking (starting from the top and clockwise)		Contacts				flush upper pushbutton flush right pushbutton flush lower pushbutton flush left pushbutton satin chrome ring
		pos 3	pos 2	pos 4	pos 1	
	"↑" black pushbutton			1NO	E2 AC-DXBC2000 E2 1PQFA9QAAA + E2 1BAC21 + E2 CP10G2V1 + E2 CP10G2V1 + E2 CP10G2V1 + E2 CP10G2V1	
	"→" black pushbutton			1NO		
	"↓" black pushbutton		1NO			
	"←" black pushbutton	1NO				

Actuator colour and marking (starting from the top and clockwise)		Contacts				flush upper pushbutton projecting right pushbutton flush lower pushbutton flush left pushbutton satin chrome ring
		pos 3	pos 2	pos 4	pos 1	
	"↑" black pushbutton			1NO	E2 AC-DXBC2001 E2 1PQHA9QAAH + E2 1BAC21 + E2 CP10G2V1 + E2 CP10G2V1 + E2 CP10G2V1 + E2 CP01G2V1	
	"STOP" red pushbutton			1NC ⊖		
	"↓" black pushbutton		1NO			
	"START" green pushbutton	1NO				

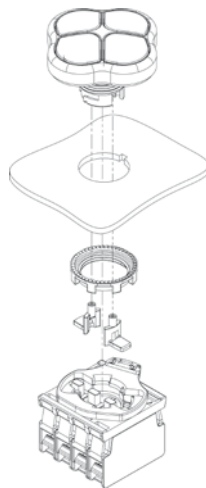
Contacts maximum number

Fixing adapter with 4 positions

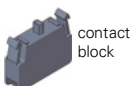
Quadruple pushbuttons E2 1PQ●●●●●●●●



Maximum number:
contacts 8
levels 2

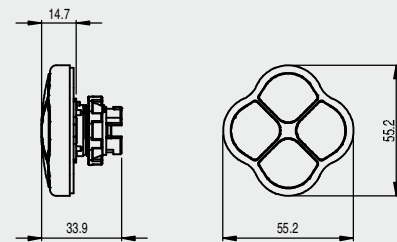


The assembly of the two lateral actuators, supplied with the quadruple button, must be done after the fixing of the pushbutton.

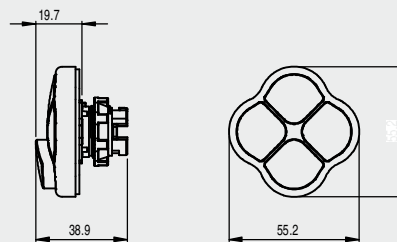


Dimensions

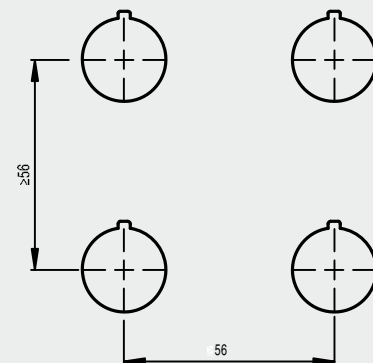
Flush quadruple pushbutton



Flush quadruple pushbutton



Assembling minimum distances



All measures in the drawings are in mm